



 A MESTEK COMPANY



LCS-10

Light Commercial Slope-Top
Enclosures for Hydronic Heating



LCS-10

Sterling Light Commercial Slope-Top Enclosures

The Sterling LCS-10 offers an outstanding value in a light commercial hydronic heating enclosure. Capable of utilizing two tiers of element, the LCS-10 offers high output in a low profile slope-top enclosure. The 3-1/4 inch depth and slope top make this attractive enclosure a real space-saver. LCS-10 elements are available in both copper/aluminum and steel in a wide variety of sizes and outputs.

For ease of installation, the LCS-10 features a self locating bracket with pre-punched mounting holes. The stamped pencil-proof louvers prevent trash accumulation on the element while meeting the specifications of demanding engineers and architects. And, because the LCS-10 does not require a full backplate, it can be mounted off of the finished floor.

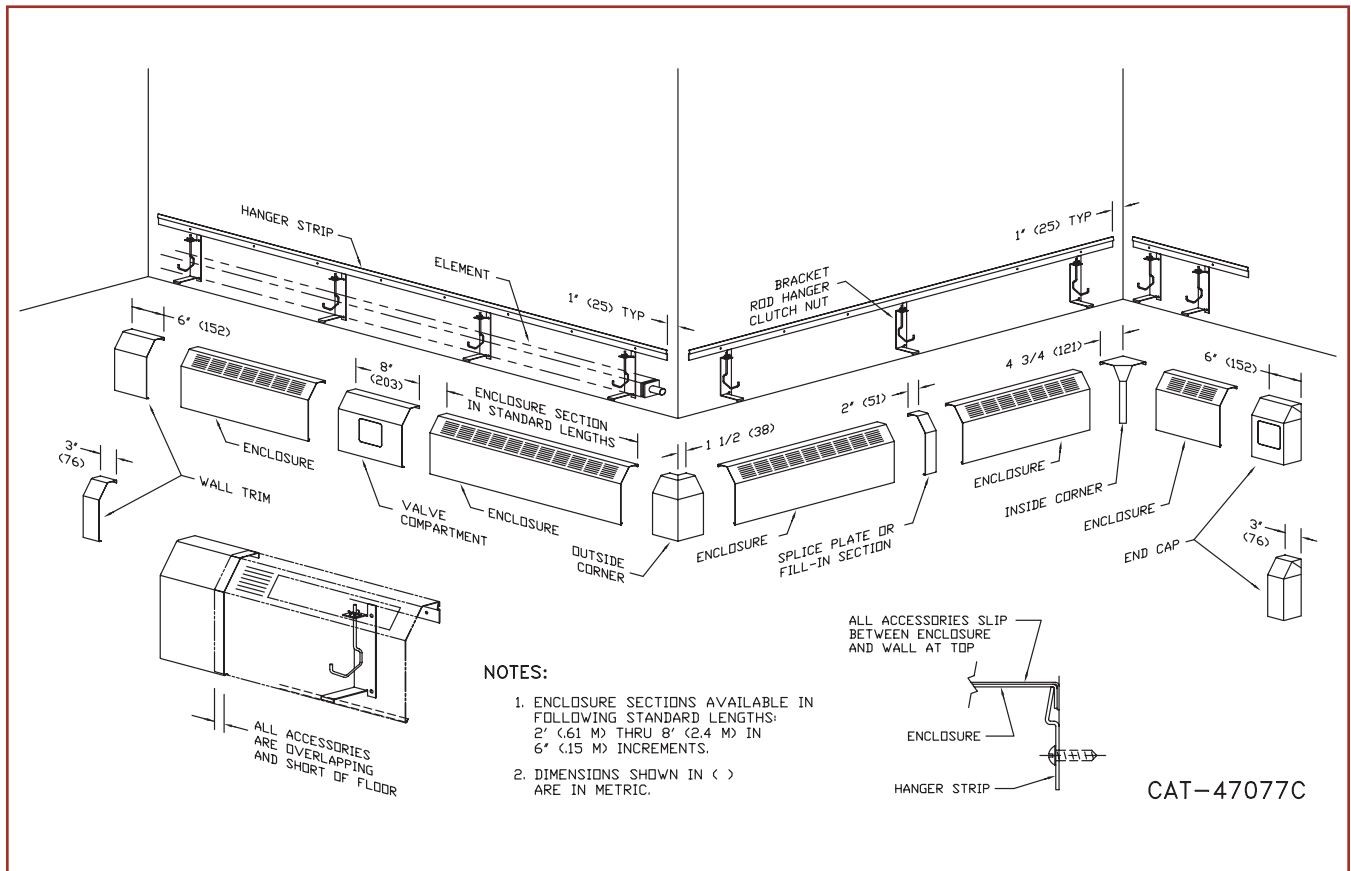
All Sterling LCS-10 enclosures feature a durable baked powder finish and are available in Sterling's full selection of colors. Constructed of 18-gauge cold rolled steel (16-gauge optional), this durable enclosure is ideal for dormitories, military housing, nursing homes, offices and reception areas.

All Sterling commercial hydronic products are made from recycled materials.

FEATURES

- Two tier capacity
- Heavy 18-gauge enclosure (16-gauge optional)
- Narrow 3-1/4 inch depth
- Low 10-1/4 inch height
- Stamped pencil-proof louvers
- Broad choice of elements
- Baked powder finish
- Self-locating brackets

GENERAL LAYOUT



RATINGS LCS-10

STYLE Light Commercial "LCS-10"

COPPER/ALUMINUM ELEMENT RATINGS
ALL RATINGS ARE BASED ON 3 FPS VELOCITY, 65° EAT

TUBE SIZE	CATALOG DESIGNATION	FIN SIZE HEIGHT X WIDTH	FINS PER FT.	FIN THICKNESS IN INCHES	TIERS AND CENTERS IN INCHES	MTG. HEIGHT IN INCHES	STEAM 215°F FACTOR	HOT WATER (AVG.)									
								200°	190°	180°	170°	160°	150°	140°	130°	120°	
								CORRECTION FACTORS FOR AVERAGE WATER TEMPERATURES									
3/4"	R02	2-1/2" x 2-3/4"	60	.010	1	14-1/4	1140	0.86	0.78	0.69	0.61	0.53	0.45	.40	.33	.26	
					2-3-1/2 CL	14-1/4	1560	0.86	0.78	0.69	0.61	0.53	0.45	.40	.33	.26	
1"	R03	2-1/2" x 2-3/4"	55	.011	1	14-1/4	1090	0.86	0.78	0.69	0.61	0.53	0.45	.40	.33	.26	
					2-3-1/2 CL	14-1/4	1600	0.86	0.78	0.69	0.61	0.53	0.45	.40	.33	.26	
3/4"	R04	3-3/4" x 2-3/4"	50	.014	1	14-1/4	1170	0.86	0.78	0.69	0.61	0.53	0.45	.40	.33	.26	
1"	R05	3-3/4" x 2-3/4"	50	.011	1	14-1/4	1130	0.86	0.78	0.69	0.61	0.53	0.45	.40	.33	.26	
1-1/4"	R08	3-3/4" x 2-3/4"	50	.020	1	14-1/4	1150	0.86	0.78	0.69	0.61	0.53	0.45	.40	.33	.26	
1"	R06	5" x 2-3/4"	40	.020	1	14-1/4	1200	0.86	0.78	0.69	0.61	0.53	0.45	.40	.33	.26	
1"	R07	5" x 2-3/4"	50	.020	1	14-1/4	1210	0.86	0.78	0.69	0.61	0.53	0.45	.40	.33	.26	
1-1/4"	R09	5" x 2-3/4"	40	.020	1	14-1/4	1150	0.86	0.78	0.69	0.61	0.53	0.45	.40	.33	.26	
1-1/4"	R10	5" x 2-3/4"	50	.020	1	14-1/4	1230	0.86	0.78	0.69	0.61	0.53	0.45	.40	.33	.26	

STYLE Light Commercial "LCS-10"

STEEL ELEMENT RATINGS
ALL RATINGS ARE BASED ON 3 FPS VELOCITY, 65° EAT

TUBE SIZE	CATALOG DESIGNATION	FIN SIZE HEIGHT X WIDTH	FINS PER FT.	FIN THICKNESS IN INCHES	TIERS AND CENTERS IN INCHES	MTG. HEIGHT IN INCHES	STEAM 215°F FACTOR	HOT WATER (AVG.)									
								200°	190°	180°	170°	160°	150°	140°	130°	120°	
								CORRECTION FACTORS FOR AVERAGE WATER TEMPERATURES									
1"	R11	3-3/4" x 2-3/4"	40	.024	1	14-1/4	910	0.86	0.78	0.69	0.61	0.53	0.45	.40	.33	.26	
1"	R15	5" x 2-3/4"	50	.024	1	14-1/4	1100	0.86	0.78	0.69	0.61	0.53	0.45	.40	.33	.26	
1-1/4"	R16	5" x 2-3/4"	50	.024	1	14-1/4	1150	0.86	0.78	0.69	0.61	0.53	0.45	.40	.33	.26	

The ratings of the charts above include factors shown in the chart below for the recommended mounting height. Two tier ratings are based on 31/2" between elements. Ratings are in BTU per hour per lineal foot of active length. "Active length" is the catalog ordering length less 4". The water ratings applicable to water flow rates of three or more feet per second, have been determined by applying factors shown to the Steam Ratings. Elements unpainted. If the unit is to be installed at a height different than the recommended mounting height, the rating must be adjusted as follows:

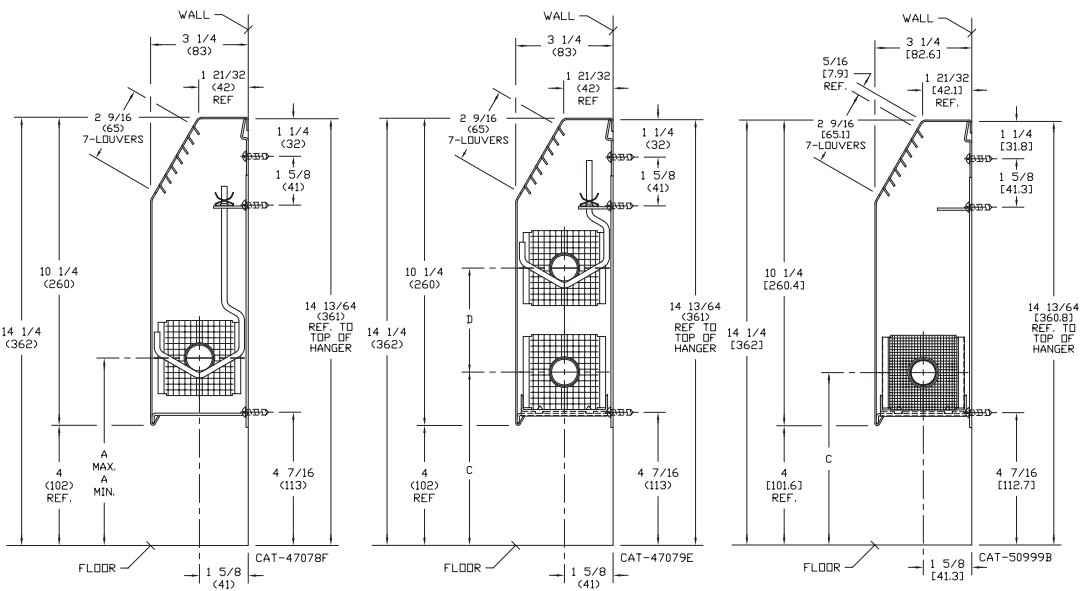
RATING MULTIPLIED BY: $\frac{\text{FACTOR FROM TABLE B FOR THE ACTUAL MOUNTING HEIGHT}}{\text{FACTOR FROM TABLE B FOR THE RECOMMENDED MOUNTING HEIGHT}}$

Table B

MOUNTING HEIGHT IN IN.	18 or less	19	20	21	22	23	24	25	26	27	28	29	30	32	34	36	38 or more
FACTOR 3 1/4" OFFSET	1.100	1.100	1.098	1.091	1.085	1.078	1.071	1.065	1.058	1.051	1.045	1.038	1.031	1.019	1.012	1.006	1.000

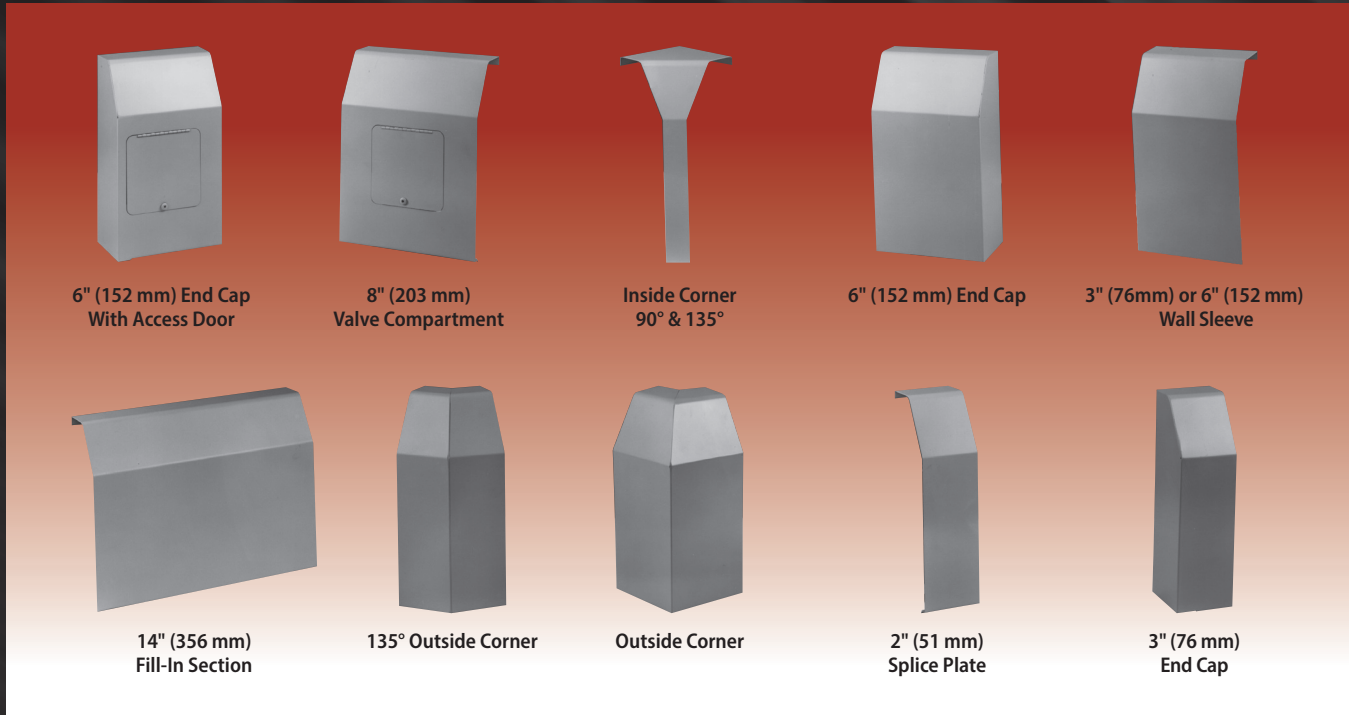
CAT. NO.	A MIN.	A MAX.
R02	5 15/16 (150.8)	8 7/16 (214.3)
R03	6 1/16 (154)	8 5/8 (219.1)
R04	6 9/16 (166.7)	8 15/16 (227)
R05	6 9/16 (166.7)	9 1/8 (231.8)
R06	7 1/8 (181)	8 11/16 (220.7)
R07	7 1/8 (181)	8 11/16 (220.7)
R08	6 11/16 (169.9)	9 1/4 (235)
R09	7 3/16 (182.6)	8 11/16 (220.7)
R10	7 3/16 (182.6)	9 3/16 (233.4)
R11	6 11/16 (169.9)	9 3/16 (233.4)
R15	7 3/16 (182.6)	8 11/16 (220.7)
R16	7 3/16 (182.6)	8 11/16 (220.7)

CAT. NO.	C	D
R02	5 25/32 (147)	3 1/2 (89)
R03	5 25/32 (147)	3 1/2 (89)
R04	6 7/32 (156)	N/A
R05	6 7/32 (156)	N/A
R06	7 1/32 (176)	N/A
R07	7 1/32 (176)	N/A
R08	6 7/32 (156)	N/A
R09	7 1/32 (176)	N/A
R10	7 1/32 (176)	N/A
R11	6 7/32 (156)	N/A
R15	7 1/32 (176)	N/A
R16	7 1/32 (176)	N/A



Dimensions are in inches. Dimensions in parentheses are in millimeters

ACCESSORIES



SPECIFICATIONS FOR THE LCS-10

Furnish and install where shown on all plans/drawings, Sterling LCS-10 Finned Tube Enclosure and Element as described or approved equal of both quality and BTU capacity.

The finned tube enclosure, as called out LCS-10, will be manufactured from 18-gauge (16-gauge optional) bonderized C.R.S. with a baked powder prime finish. The air discharge louvers are to be die formed stamped into the steel enclosure. The louver openings are to be "Pencil Proof". All lateral bends are to be formed on bottoming dies to ensure continuity of all adjoining enclosures and accessories. The enclosure lengths are to be provided in 6 inch increments from 2 feet through 8 feet long. The enclosure is to fully engage in a continuous full length mounting strip mounted to the wall. A two (2) inch joiner strip is to be used where two pieces of enclosure are adjoining each other in a run.

All accessories will be die formed 20-gauge cold rolled steel and finished with the baked prime finish described above. The accessories will overlap the installed enclosure and are to provide adjustment for make-up in the installed runs of enclosure.

The brackets are to be of a one piece, die formed construction. The material is to be 14-gauge C.R.S. with a baked prime finish. The bracket is to be self locating for vertical positioning at installation. The bottom horizontal leg is to snap into bottom bend of the enclosure and is to support the element when slide shoes are used. The top horizontal leg is to support the adjustable element hanger. Adjustable rod hangers are to be supplied when specified. These will be used in conjunction with the various elements that do not incorporate a nylon slide. They will also be used when the installation requires pitch adjustment for steam applications.

The mounting strip is to be supplied in eight (8) foot lengths. It will be die formed heavy gauge, galvanized material.

All elements are to be of the mechanically expanded type to ensure that proper fin to tube bonding is maximized. Copper/Aluminum elements are to be provided with one end mechanically swaged (flared) for proper assembly. Steel/Steel element are to be provided with both ends threaded to accept all domestic NPT fittings or cut square and chamfered for field welding.

In the interest of product improvement, we reserve the right to make changes without notice.



STERLING
COMMERCIAL HYDRONIC PRODUCTS

260 North Elm Street, Westfield MA 01085

Tel: (413) 564-5535

www.sterlingheat.com



A MESTEK COMPANY